

MANIFOLD A CINQUE VALVOLE E TRE VIE SERIE MAN5
FIVE VALVES AND THREE WAYS MANIFOLD MAN5 SERIES



DESCRIZIONE

I manifold della serie **MAN5** sono collettori a tre vie e cinque valvole utilizzati per isolare lo strumento di misura dall'impianto in modo da mettere in atto operazioni di manutenzione.

Tra le caratteristiche salienti di questo prodotto troviamo:

- Pressione di lavoro 6.000 psi (414 bar)
 - Opzionale 10.000 psi (690 bar)
- Grande varietà di materiali:
 - AISI 316 (Std)
 - AISI 316L
 - CARBON STEEL
 - MONEL
 - TITANIUM
 - HASTELLOY
 - INCONEL
- Conformità alla norma NACE MR-01-75 (Opzione)
- Sgrassaggio per servizio con Ossigeno (Opzione)

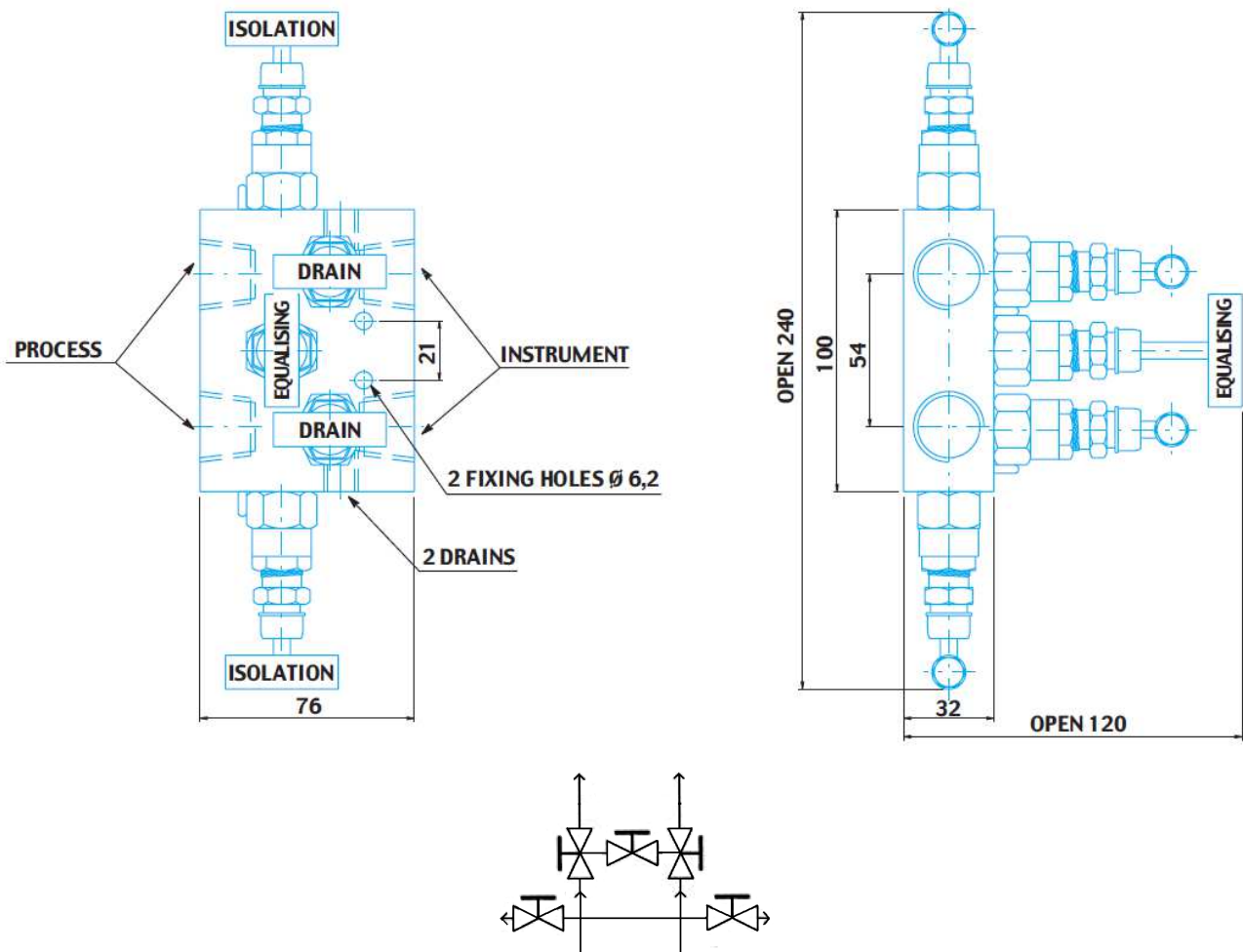
DESCRIPTION

Three ways and five valves manifolds **MAN5** series are used to isolate the instrument from the plant in order to put in place maintenance operations.

Some of the main characteristics of this product are:

- Working pressure up to 6000 psi (414 bar)
 - 10.000 psi (690 bar) as option
- Various materials to be used:
 - AISI 316 (Std)
 - AISI 316L
 - CARBON STEEL
 - MONEL
 - TITANIUM
 - HASTELLOY
 - INCONEL
- Conformity to NACE MR-01-75 (Optional)
- Degreasing for Oxygen service (Optional)

Modello / Model: MAN5-R1



Descrizione:

- Manifold a 5 vie montaggio remoto

Conessioni:

- Processo: 1/2" NPT-F
- Strumento: 1/2" NPT-F
- Scarico: 1/4" NPT-F + Tappo

Pressione di servizio:

- 6000 psi (414 bar)

Materiali:

- A105, AISI316 L, Monel, Hastelloy etc.

Guarnizioni:

- PTFE ($T \leq 180^{\circ}\text{C}$)
- Graphoil ($T > 180^{\circ}\text{C}$)

Description

- 5 ways manifold remote mounting

Connections:

- Process: 1/2" NPT-F
- Instrument: 1/2" NPT-F
- Drain: 1/4" NPT-F + Plug

Max Working Pressure:

- 6000 psi (414 bar)

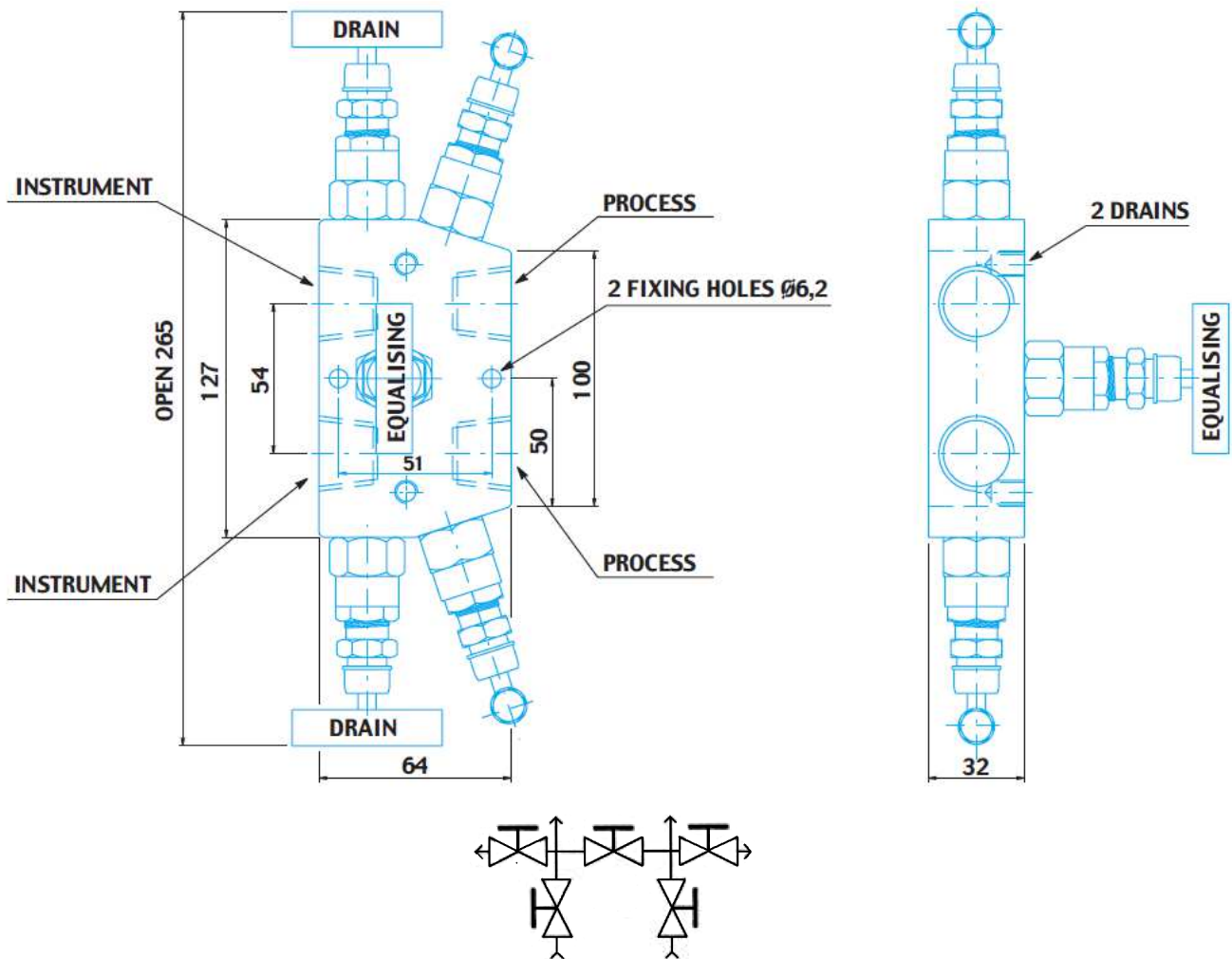
Materials:

- A105, AISI316 L, Monel, Hastelloy etc.

Gaskets:

- PTFE ($T \leq 180^{\circ}\text{C}$)
- Graphoil ($T > 180^{\circ}\text{C}$)

Modello / Model: MAN5-R3



Descrizione:

- Manifold a 5 vie montaggio remoto

Conessioni:

- Processo: 1/2" NPT-F
- Strumento: 1/2" NPT-F
- Scarico: 1/4" NPT-F + Tappo

Pressione di servizio:

- 6000 psi (414 bar)

Materiali:

- A105, AISI316 L, Monel, Hastelloy etc.

Guarnizioni:

- PTFE (T≤180°C)
- Graphoil (T>180°C)

Description

- 5 ways manifold remote mounting

Connections:

- Process: 1/2" NPT-F
- Instrument: 1/2" NPT-F
- Drain: 1/4" NPT-F + Plug

Max Working Pressure:

- 6000 psi (414 bar)

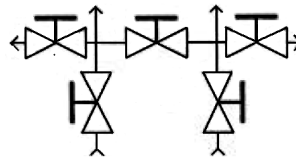
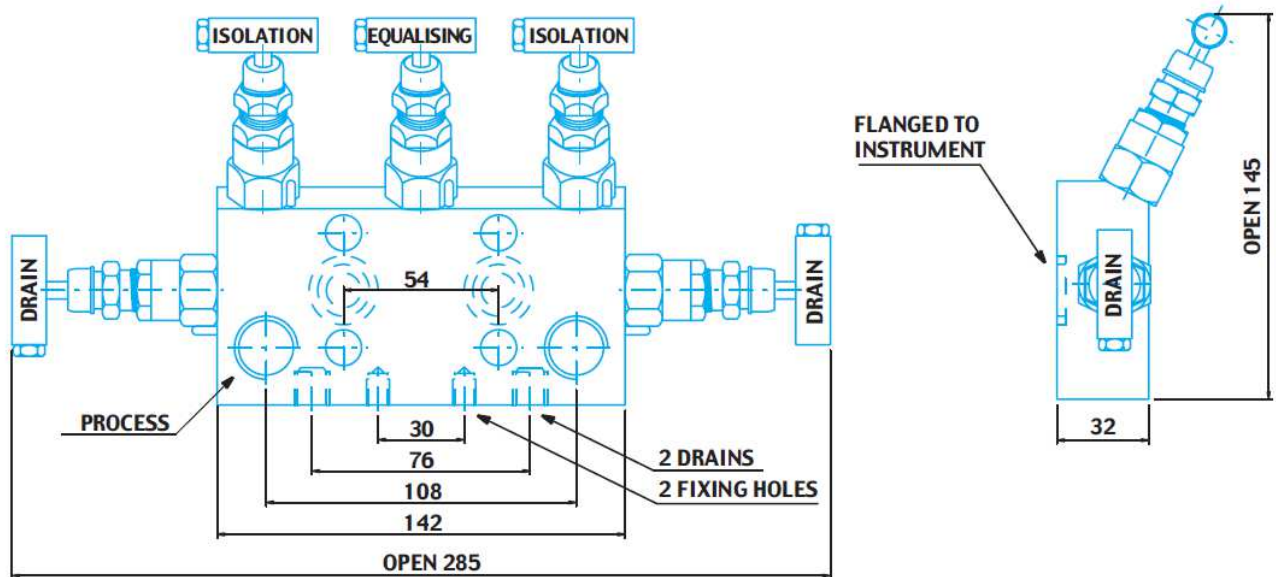
Materials:

- A105, AISI316 L, Monel, Hastelloy etc.

Gaskets:

- PTFE (T≤180°C)
- Graphoil (T>180°C)

Modello / Model: MAN5-D1



Descrizione:

- Manifold a 5 vie montaggio diretto

Conessioni:

- Processo: 1/2" NPT-F
- Strumento: Flangiato
- Scarico: 1/4" NPT-F + Tappo

Pressione di servizio:

- 6000 psi (414 bar)

Materiali:

- A105, AISI316 L, Monel, Hastelloy etc.

Guarnizioni:

- PTFE (T≤180°C)
- Graphoil (T>180°C)

Accessori:

- Tiranti 7/16" UNF - Q.tà 4
- Guarnizioni PTFE - Q.tà 2

Description

- 5 ways manifold direct mounting

Connections:

- Process: 1/2" NPT-F
- Instrument: Flanged
- Drain: 1/4" NPT-F + Plug

Max Working Pressure:

- 6000 psi (414 bar)

Materials:

- A105, AISI316 L, Monel, Hastelloy etc.

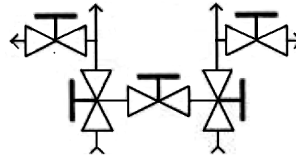
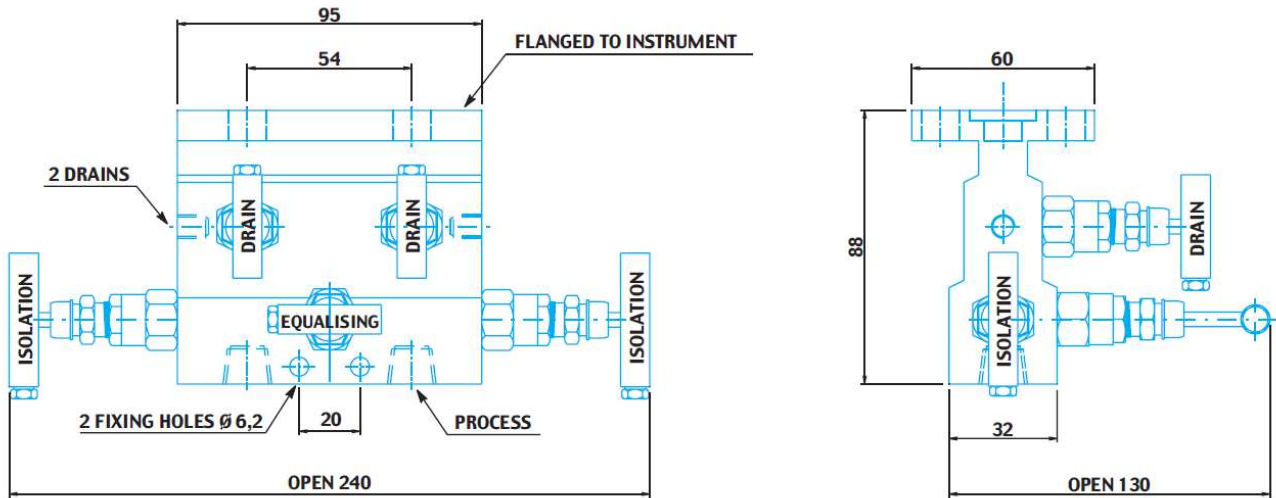
Gaskets:

- PTFE (T≤180°C)
- Graphoil (T>180°C)

Accessories:

- Q.ty 4 Stud bolts 7/16" UNF
- Q.ty 2 PTFE sealing rings

Modello / Model: MAN5-D2



Descrizione:

- Manifold a 5 vie montaggio diretto

Conessioni:

- Processo: 1/2" NPT-F
- Strumento: flangiato
- Scarico: 1/4" NPT-F + Tappo

Pressione di servizio:

- 6000 psi (414 bar)

Materiali:

- A105, AISI316 L, Monel, Hastelloy etc.

Guarnizioni:

- PTFE ($T \leq 180^{\circ}\text{C}$)
- Graphoil ($T > 180^{\circ}\text{C}$)

Accessori (inclusi):

- tiranti 4" 7/16 UNF quantità 4
- 2 guarnizioni in PTFE

Description

- 5 ways manifold direct mounting

Connections:

- Process: 1/2" NPT-F
- Instrument. flanged
- Drain: 1/4" NPT-F + Plug

Max Working Pressure:

- 6000 psi (414 bar)

Materials:

- A105, AISI316 L, Monel, Hastelloy etc.

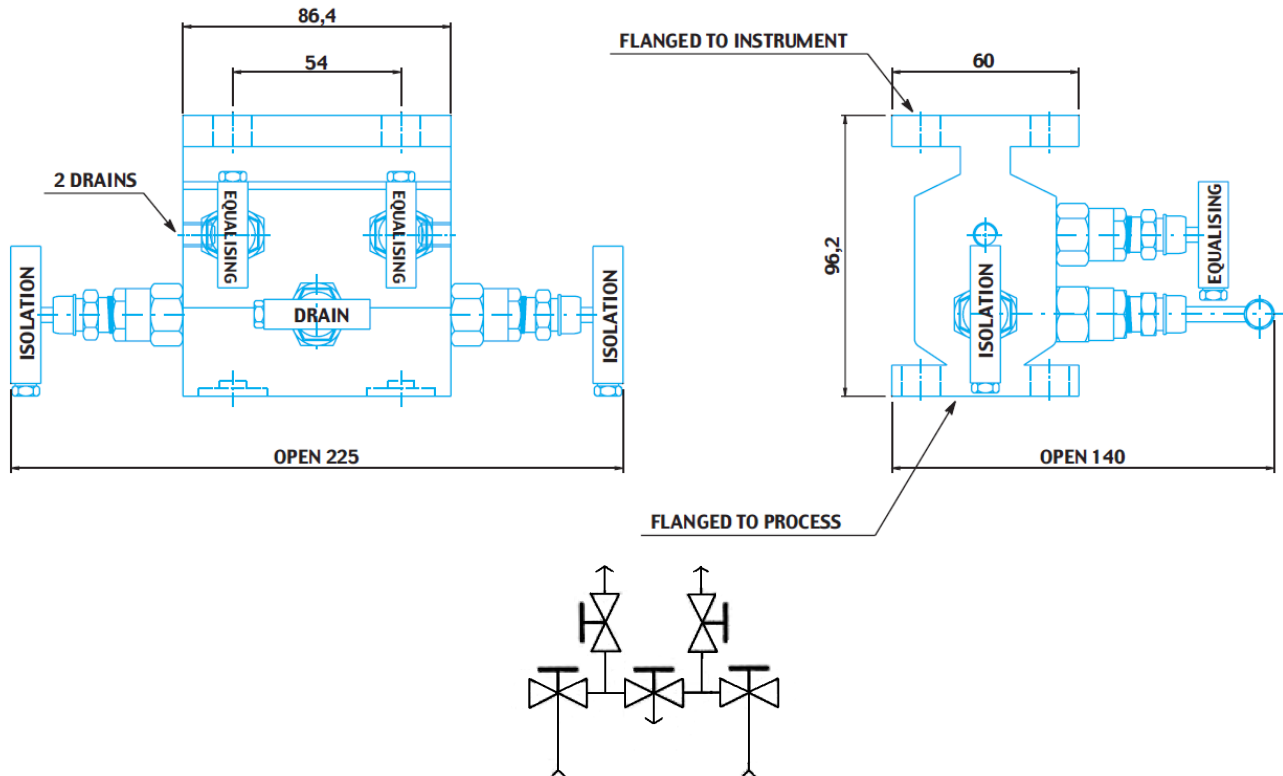
Gaskets:

- PTFE ($T \leq 180^{\circ}\text{C}$)
- Graphoil ($T > 180^{\circ}\text{C}$)

Accessories (included):

- Q.ty 4 4" 7/16 UNF stud bolts
- Q.ty 2 PTFE sealing rings

Modello / Model: MAN5-D3



Descrizione:

- Manifold a 5 vie montaggio diretto

Conessioni:

- Processo: flangiato
- Strumento: flangiato
- Scarico: 1/4" NPT-F + Tappo

Pressione di servizio:

- 6000 psi (414 bar)

Materiali:

- A105, AISI316 L, Monel, Hastelloy etc.

Guarnizioni:

- PTFE ($T \leq 180^\circ\text{C}$)
- Graphoil ($T > 180^\circ\text{C}$)

Accessori (inclusi):

- tiranti 4" 7/16 UNF quantità 4
- 2 guarnizioni in PTFE

Description

- 5 ways manifold direct mounting

Connections:

- Process: flanged
- Instrument. flanged
- Drain: 1/4" NPT-F + Plug

Max Working Pressure:

- 6000 psi (414 bar)

Materials:

- A105, AISI316 L, Monel, Hastelloy etc.

Gaskets:

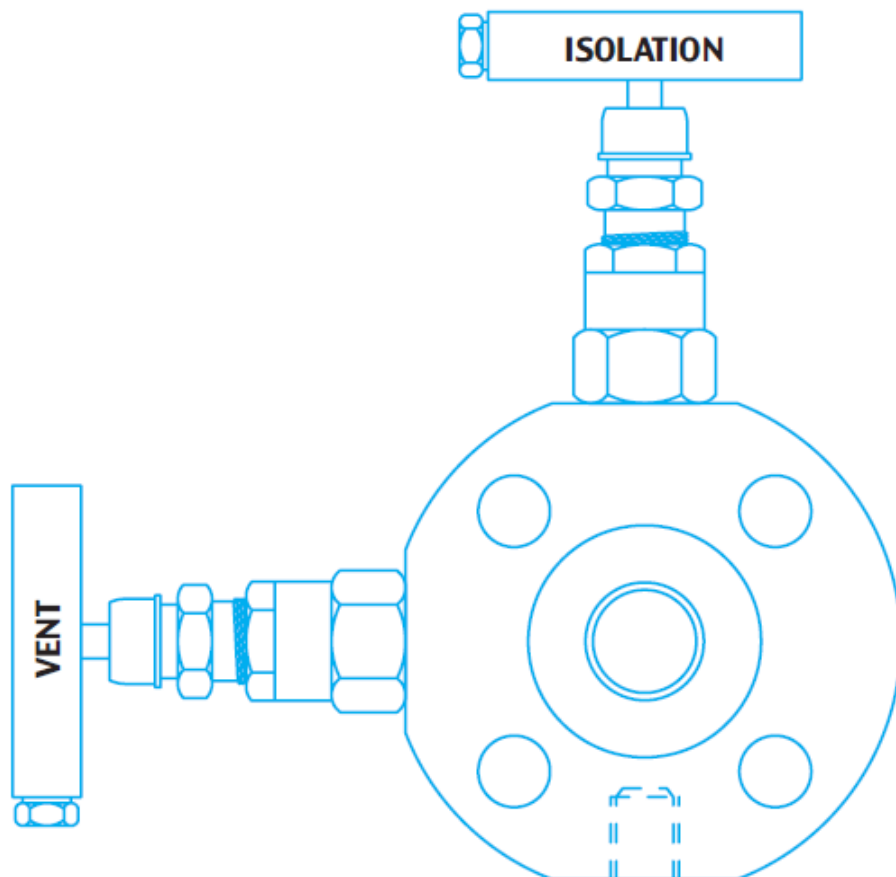
- PTFE ($T \leq 180^\circ\text{C}$)
- Graphoil ($T > 180^\circ\text{C}$)

Accessories (included):

- Q.ty 4 4" 7/16 UNF stud bolts
- Q.ty 2 PTFE sealing rings

ACCESSORIES

MANIFOLD PER CONNESSIONI FLANGIATE / FLANGED CONNECTIONS MANIFOLD



VITI E VALVOLE DI SPURGO / SCREW OR BLEED VALVES

