

MINI-SEPARATORI A MEMBRANA DIAPHRAGM SEAL "MINI"



DESCRIZIONE

Progettato specificatamente per proteggere l'elemento sensibile dei manometri dalla corrosione, da colpi d'ariete e da temperature estreme del fluido. Le applicazioni tipiche vanno da equipaggiamenti per la verniciatura alle più svariate applicazioni industriali.

CAMPI SCALA

-1...0 fino a 0...60 bar
0...10 fino a 0...250 bar
0...100 fino a 0...600 bar

CARATTERISTICHE STANDARD

Parte superiore: AISI 316 SS
Membrana: AISI 316 SS
Parte inferiore: AISI 316 SS
Connessione al processo: 1/4" o 1/2" NPT o BSP-M
Connessione dello strumento: 1/4" o 1/2" BSP-F
Fluido di riempimento: Olio siliconico (-60°C / +200°C)

OPZIONI

Fluido di riempimento:
Olio siliconico (+20°C / +300°C)
Olio Fluorolube
Olio per applicazioni alimentari (FDA)
Materiali:
Connessione al processo in HC276 o in DUPLEXF51
Membrana in HC276
Estensione alettata per temperature >100°C

DESCRIPTION

Designed specifically to protect gauges from corroding, plugging or freezing of the pressure sensing element. Typical applications are paint and agriculture spraying equipment and industrial applications.

SCALE RANGES

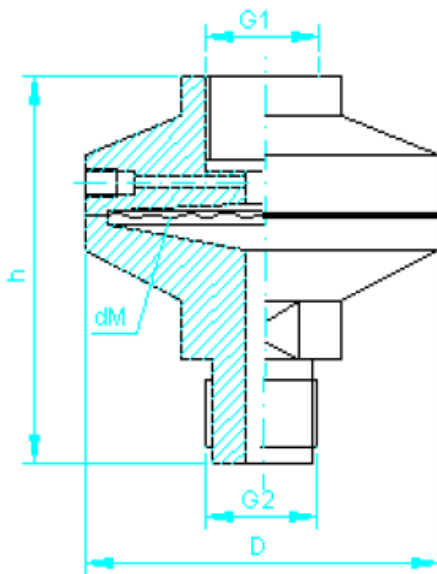
-1...0 to 0...60 bar
0...10 to 0...250 bar
0...100 to 0...600 bar

STANDARD FEATURES

Upper part: SS AISI 316
Diaphragm: SS AISI 316
Lower part: SS AISI 316
Process connection: 1/4" or 1/2" NPT or BSP-M
Instrument connection: 1/4" or 1/2" BSP-F
Filling fluid: Siliconic oil (-60°C / +200°C)

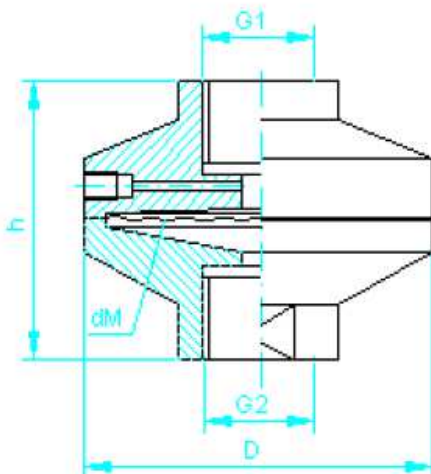
OPTIONS

Filling fluid:
Siliconic oil (+20°C / +300°C)
Fluorolube oil
Sanitary Oil (FDA)
Materials:
HC276 or DUPLEXF51 process connection
HC276 diaphragm
Cooling tower for directly mounted gauge when temperature is >100°C.



Dimensions (mm)

G2	dM	D	h	G1
1/4" BSP-M	59	62	66	1/4" BSP-F
1/4" NPT-M	59	62	66	1/4" BSP-F
1/2" BSP-M	59	62	70	1/2" BSP-F
1/2" NPT-M	59	62	70	1/2" BSP-F
1/2" BSP-M	40	48	65	1/2" BSP-F
1/2" NPT-M	40	48	65	1/2" BSP-F
1/2" BSP-M	32	36	65	1/2" BSP-F
1/2" NPT-M	32	36	65	1/2" BSP-F



Dimensions (mm)

G2	dM	D	h	G1
1/4" NPT-F	59	62	51	1/4" BSP-F
1/2" NPT-F	59	62	60	1/2" BSP-F
1/2" NPT-F	40	48	60	1/2" BSP-F
1/2" NPT-F	32	36	60	1/2" BSP-F

dM Diametro effettivo della membrana / Effective diaphragm diameter		
59	≥	-1/0 to 0/60 bar
40	≥	10 to 250 bar
32	≥	100 to 0/600 bar